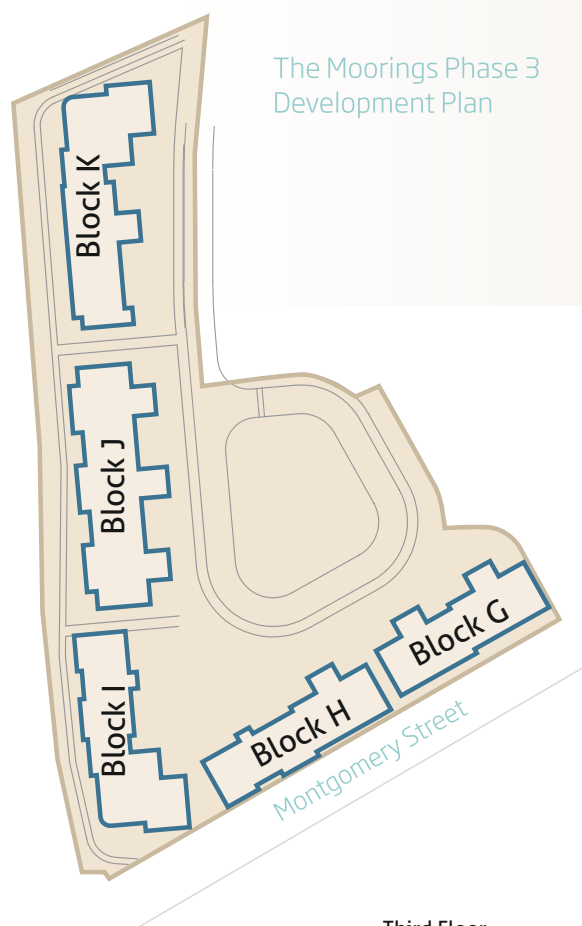
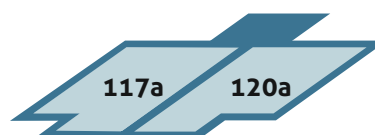


The Moorings Phase 3
Development Plan

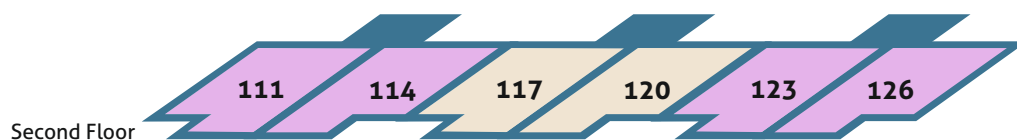
at Irvine Harbourside
themoorings



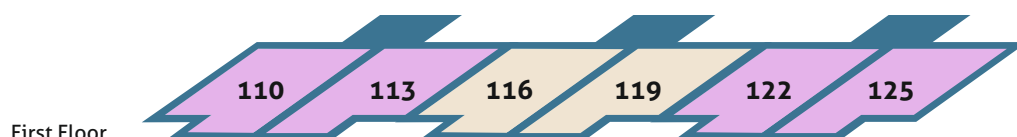
Apartment Block J



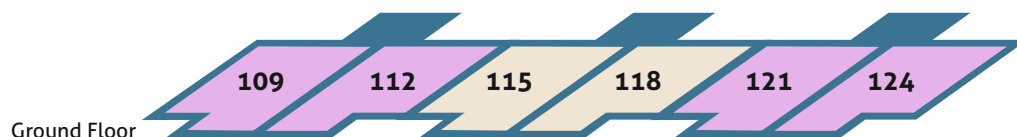
Third Floor



Second Floor



First Floor



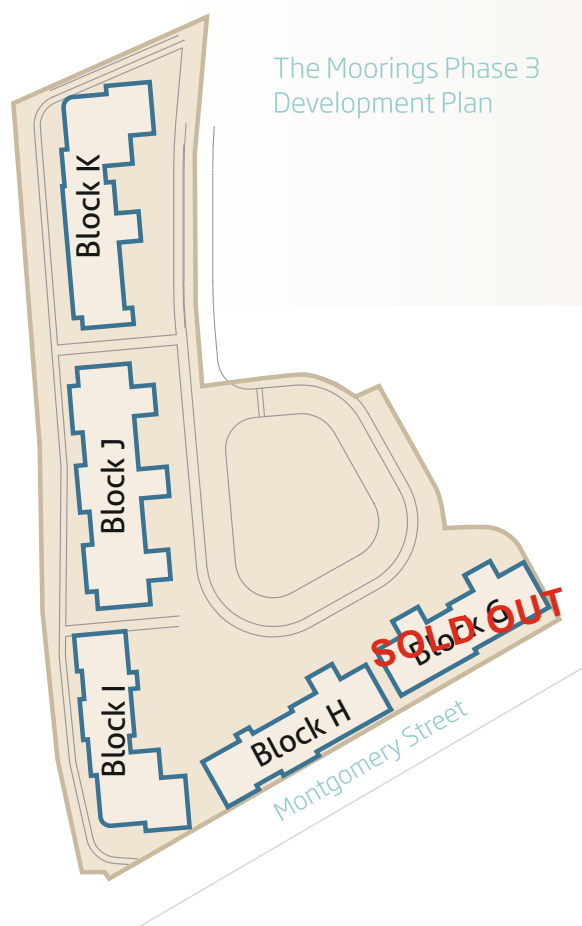
Ground Floor

Key

- The Bute
2 bedroom apartment
- The Shuna
2 bedroom apartment
- The Shuna 2
2 bedroom apartment

at Irvine Harbourside themoorings

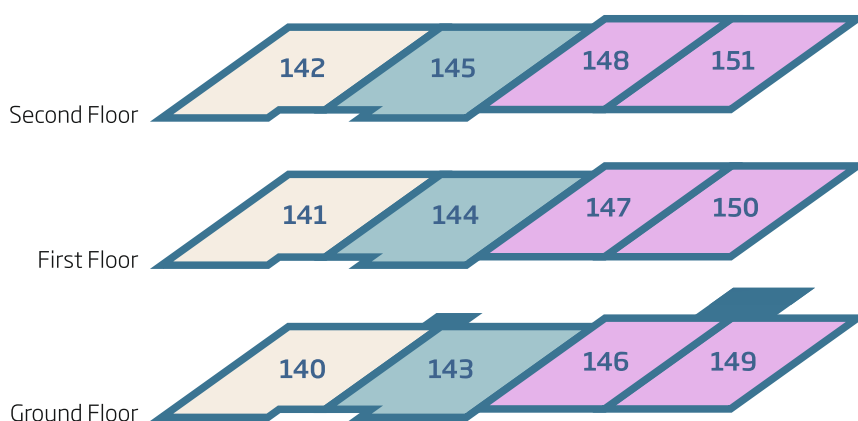
The Moorings Phase 3
Development Plan



Apartment Block H

Key

-  **The Skye**
2 bedroom apartment
-  **The Harris**
2 bedroom apartment
-  **The Islay**
3 bedroom apartment



Specification



A selection of quality features incorporated into your new home at The Moorings, Irvine Harbourside.

Kitchen

- Fully fitted kitchen with integrated washer/dryer, fridge freezer and dishwasher. Upstand around worktop, splash back at hob
- Inset stainless steel sink with co-ordinating mixer taps
- Stainless steel single oven/hob/hood
- Downlighters
- Under unit lighting
- Quality vinyl flooring

Bathrooms and En-Suites

- Quality white sanitary ware
- Chrome taps
- Extractor fan
- Porcelanosa ceramic wall tiling to wet areas
- Thermostatic control to en-suite shower
- Downlighters
- Quality vinyl flooring

Internal Features

- Gas central heating
- Thermostatic radiator valves
- Sky compliant TV system to living room and master bedroom
- Telephone point in hall, lounge and master bedroom
- Mains operated smoke detector

Other Features

- Video entry door system
- Premier Guarantee
- Landscaped communal areas
- uPVC fascia and soffits
- Grey concrete roof tiles generally, natural slate to Montgomery Street elevation

Wardrobes

- Sliding mirror doors
- Internal shelf and attached hanging rail

Windows and Doors

- uPVC white double glazed windows, mock sash and case to Montgomery Street
- Ladder moulded internal fire doors
- Chrome ironmongery to doors

Communal Stair Well Area

- Carpet to all floors including stairs

Decoration

- Smooth finish ceilings - white
- Emulsion to walls - champagne or white

Customer Choice

Please ask our sales executive for more details



Specification may be subject to change. Ask our Sales Executive to confirm specification of your chosen Apartment.

The Harris

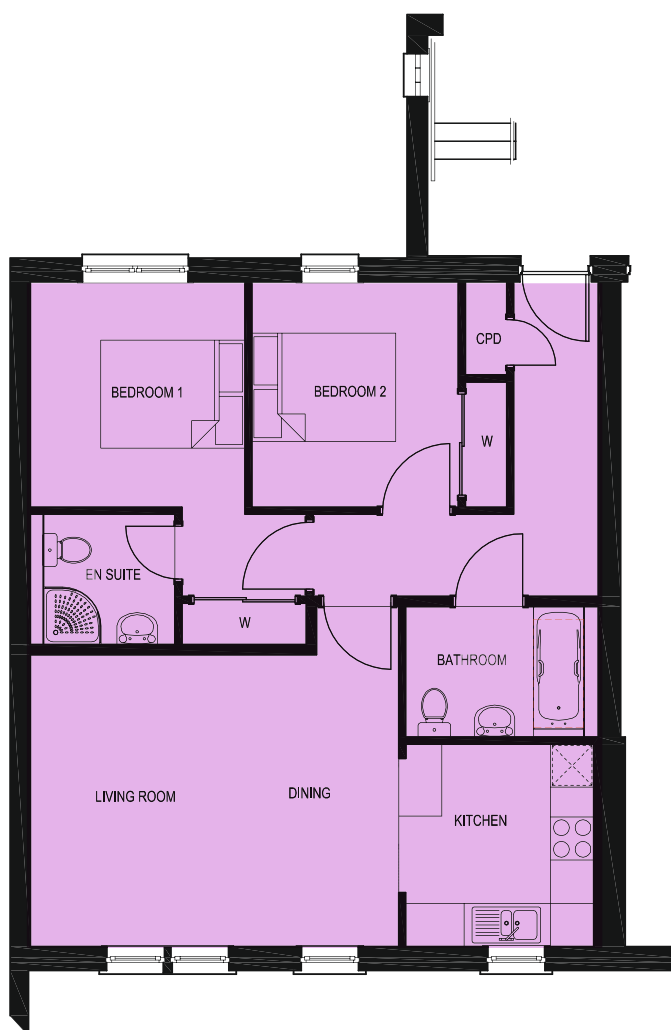
2 bedroom apartment



Living / Dining	6.188 x 3.800 m	20'4" x 12'6"
Kitchen	2.900 x 2.725 m	9'6" x 8'11"
Bedroom 1	3.398 x 3.172 m	11'2" x 10'5"
Bedroom 2	3.243 x 2.746 m	10'8" x 9'0"
Total floor area	72.8 sq m	783.6 sq ft

The Skye

2 bedroom apartment



Living / Dining	5.112 x 4.050 m	15'9" x 13'3"
Kitchen	2.813 x 2.613 m	9'3" x 8'7"
Bedroom 1	3.128 x 2.977 m	10'3" x 9'9"
Bedroom 2	3.128 x 2.869 m	10'3" x 9'5"
Total floor area	72.2 sq m	777.7 sq ft



The Islay

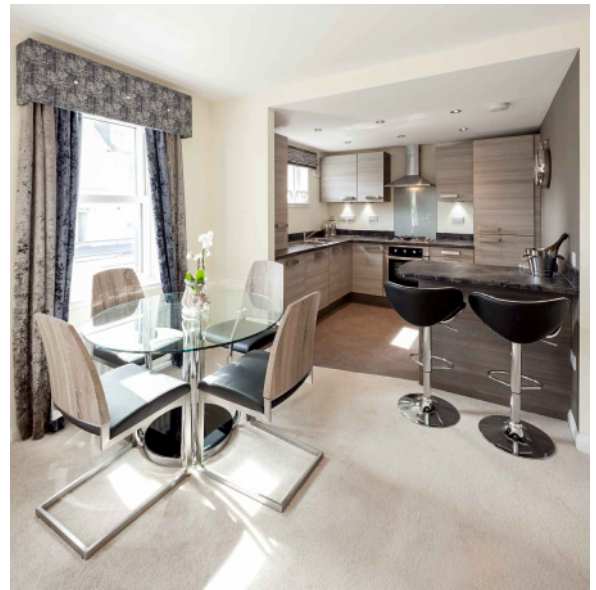
3 bedroom apartment



Living / Dining	4.656 x 4.515 m	15'3" x 14'10"
Kitchen	3.013 x 2.426 m	9'11" x 8'0"
Bedroom 1	3.900 x 2.964 m	12'9" x 9'9"
Bedroom 2	3.243 x 2.939 m	10'8" x 9'8"
Bedroom 3	2.900 x 2.788 m	9'6" x 9'2"
Total floor area	82.1 sq m	883.7 sq ft

The Bute

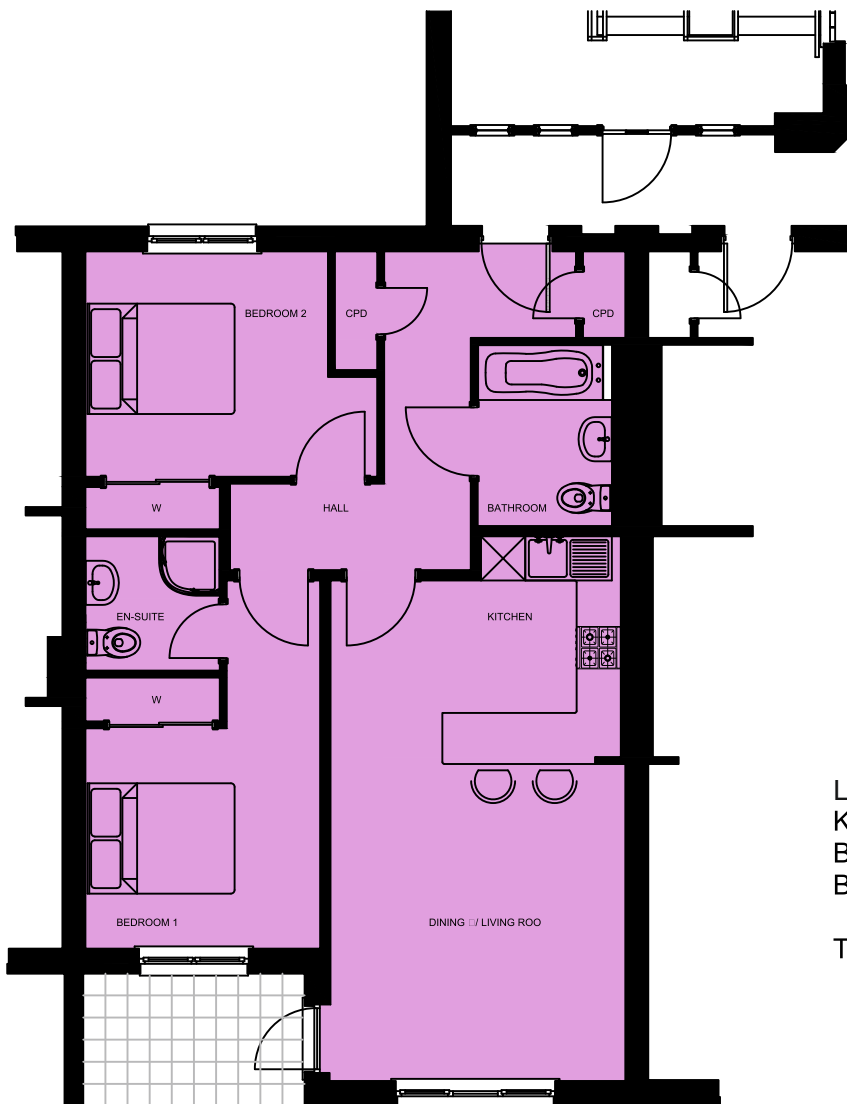
2 bedroom apartment



Living / Dining	4020 x 4475 m	13' 2" x 14' 8"
Kitchen	3375 x 3295 m	11' 1" x 10' 10"
Bedroom 1	2685 x 3475 m	8' 10" x 11' 5"
Bedroom 2	2675 x 3475 m	8' 9" x 11' 5"
Total floor area	77.3 sq m	832 sq ft

The Shuna

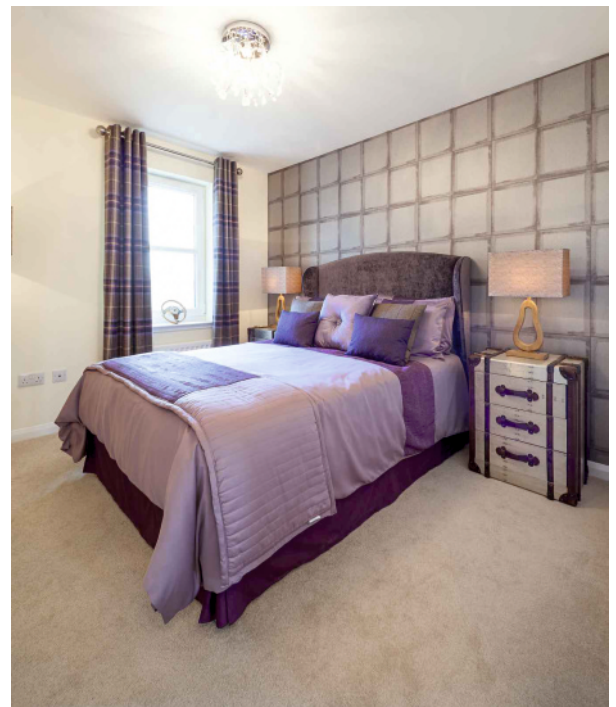
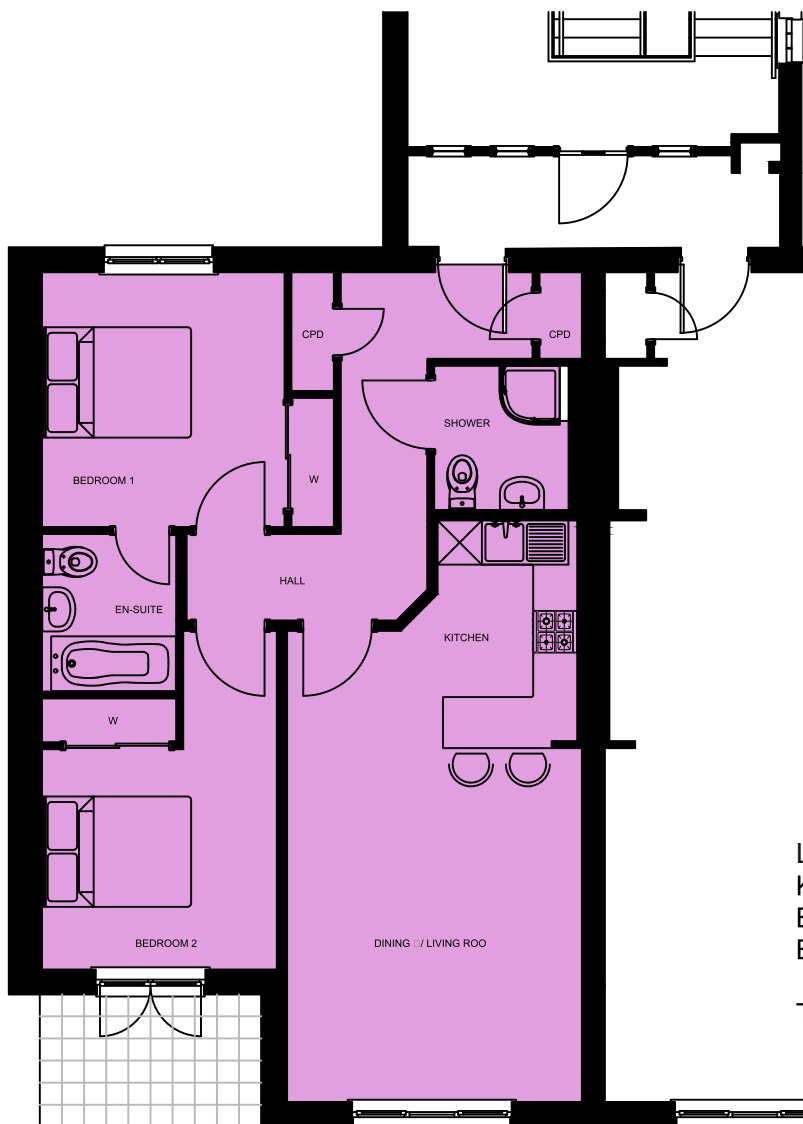
2 bedroom apartment



Living / Dining	4020 x 4405 m	13' 2" x 14' 5"
Kitchen	4020 x 3000 m	13' 2" x 9' 10"
Bedroom 1	3295 x 2995 m	10' 6" x 9' 10"
Bedroom 2	3965 x 3065 m	13' 0" x 10' 1"
Total floor area	76.6 sq m	835 sq ft

The Shuna top

2 bedroom apartment



Living / Dining	4005 x 4905 m	13' 1" x 16' 1"
Kitchen	1900 x 3000 m	6' 3 x 9' 10"
Bedroom 1	3295 x 3465 m	10' 10" x 11' 4"
Bedroom 2	3190 x 2995 m	10' 6" x 9' 10"
Total floor area	76.7 sq m	826 sq ft